

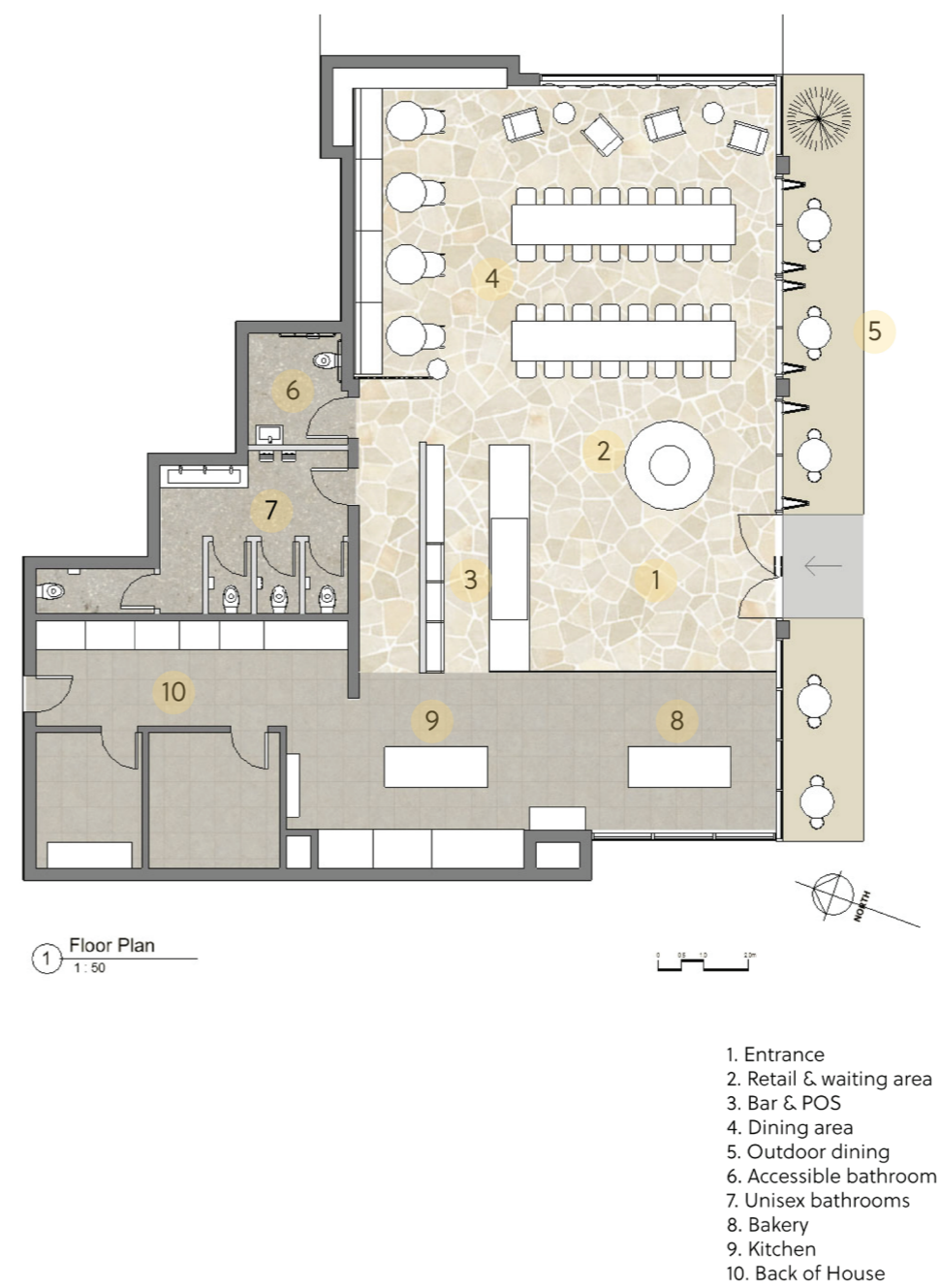


### Rise by The Bread & Butter Project

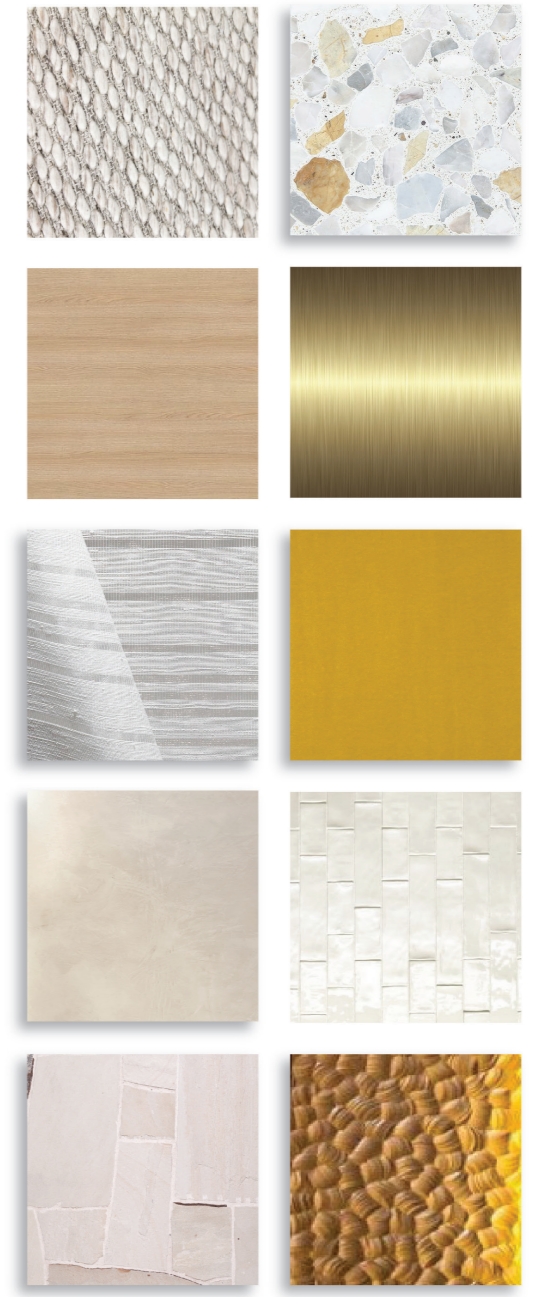
Rise is the first cafe space for the social enterprise bakery and takes the user on a journey. Beginning at the dawn of a new day, of hope and empowerment culminating in the simple pleasure of coming together, to connect over the breaking of bread and the sensual experience. And at the centre of it all – bread.

Moving away from the typical industrial style used at Bourke Street Bakery, but keeping the same feeling, Rise includes more natural and tactile materials. The palette is neutral with smooth plaster walls and sandstone paved floors. Softness and a hint of the signature butter yellow is introduced with textured furnishings on the banquette upholstery, rug and sheer fabrics.

The journey starts as you enter the space. Your senses are drawn to the open bakery kitchen giving an instant connection to the brand and the story. As you move into the dining area you can connect over the breaking of bread either at a communal table, more intimate indoor or outdoor table or relax in a lounge chair. When in the space you are given a feeling of calm, comfort and warmth just like at home.



1. Entrance
2. Retail & waiting area
3. Bar & POS
4. Dining area
5. Outdoor dining
6. Accessible bathroom
7. Unisex bathrooms
8. Bakery
9. Kitchen
10. Back of House



### The Drop

**CONCRETE WONDERLAND:** The Drop is a bold and eclectic interior space inspired by street art and cycling culture. The clients are keen cyclists. They love contemporary art and photography and want to bring the inner-city vibe to Wentworth Point.

When you enter the space, you are immediately captivated by the colourful and graphic print of the double-height mural. The artwork, commissioned by Australian street artist Beastman, became the inspiration for the design of the space.

The playful palette of aqua, blue, yellow, and orange, is reflected throughout the space; in the graffiti art, metal bar elements and shelving, staircase and the bright furniture supplied by the Bakers. The simple material palette complements the colours and industrial textures of the space with polished concrete, brushed metal, distressed timber merchandising, and a recycled blue glass bar top creating a fun and energetic space.

### Stephanie Jones

stephanieajonesdesigns@gmail.com

<https://stephjonesdesign.wixsite.com/stephaniejones>

Bachelor of Interior Design (Commercial)

