

RHEA TOWER - Penthouse

Rhea Tower is situated in one of Sydney's most sought-after locations, directly across from the iconic Harbour Bridge in beautiful Milson's Point.

The apartment spans two floors, the main entry on the first level provides shared spaces, such as the luxurious black marble kitchen, cozy dining area and an open living space with Harbour views.

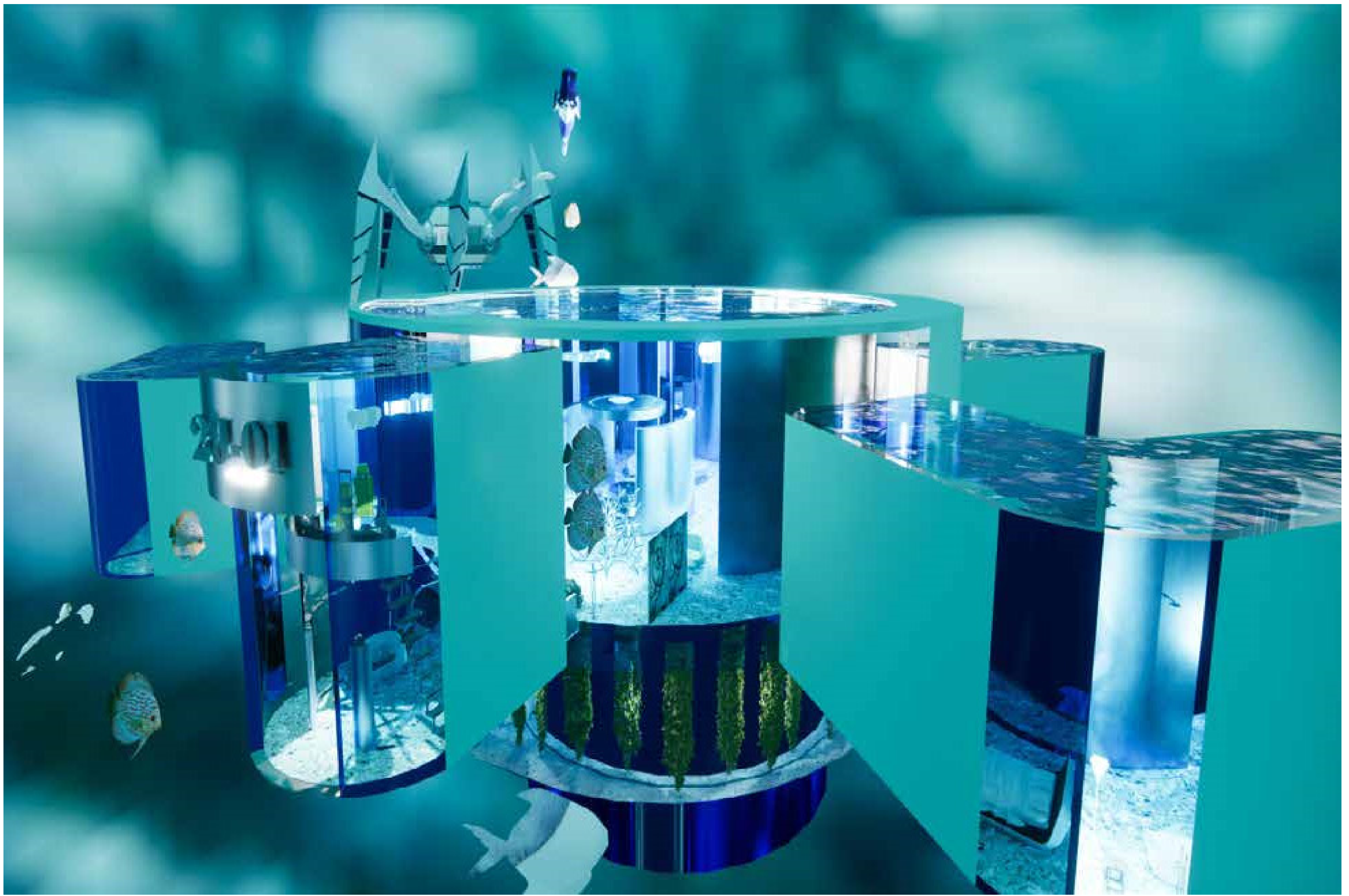
The fully contained guest room is located on this level ensuring privacy to the master suite above.

An opulent central spiral staircase provides a memorable entrance experience. The addition of brushed bronze railings, and clear glass balustrades exude sophistication and style.

The extravagant top floor retreat features a sitting area, open onyx marble spa bath and dressing room all adorned in Carrara marble. There is a small balcony offering amazing views of the famous Sydney Harbour Bridge.

An internal atrium surrounded with glass railings, allows glimpses of the lower living areas to create an open feel.

This is a truly spectacular apartment.



THE TURTLE
Group Project:

Members: Julia Townsend & Jane Garrahy

Due to the ever-increasing climate change dilemma, our client requested a prototype as the first of a fleet of totally sustainable underwater vessels to be used as unique residences as our climate changes over time.

The residence addresses the usage of recycled materials in every aspect of its development. State of the art futuristic technologies are included to minimize labour requirements and waste. A highly sophisticated desalination device eliminates the issue of clean water shortage. Solar incorporated glass encasing the structure, ensures maximum heating and cooling efficiency at all times.

The flooring throughout is a crushed oyster shell material, and the furniture in the living areas consists of recycled plastic. The rugs and carpets in various locations are also a recycled plastic material. Furniture and walls of sheet metal are made from recycled crushed aluminum cans.

There is a central control room above the entrance with advanced navigation equipment and a sister drone alerts the vessel of any damaged coral reefs on the surface. The vessel is a reproduction of a large sea turtle. It is the first of the fleet, 2J-01 or "The Turtle".

AutoCAD; SketchUp; Enscape