



Portfolio

By Amygrace Haugh

01

Illustration



1 - 4

02

Tech drawing



5 - 6

03

Garments



7 - 10

04

Tech pack



11 - 15

05

Merchandise Portfolio



16 - 18

06

Branding



19 - 20

01

Illustration



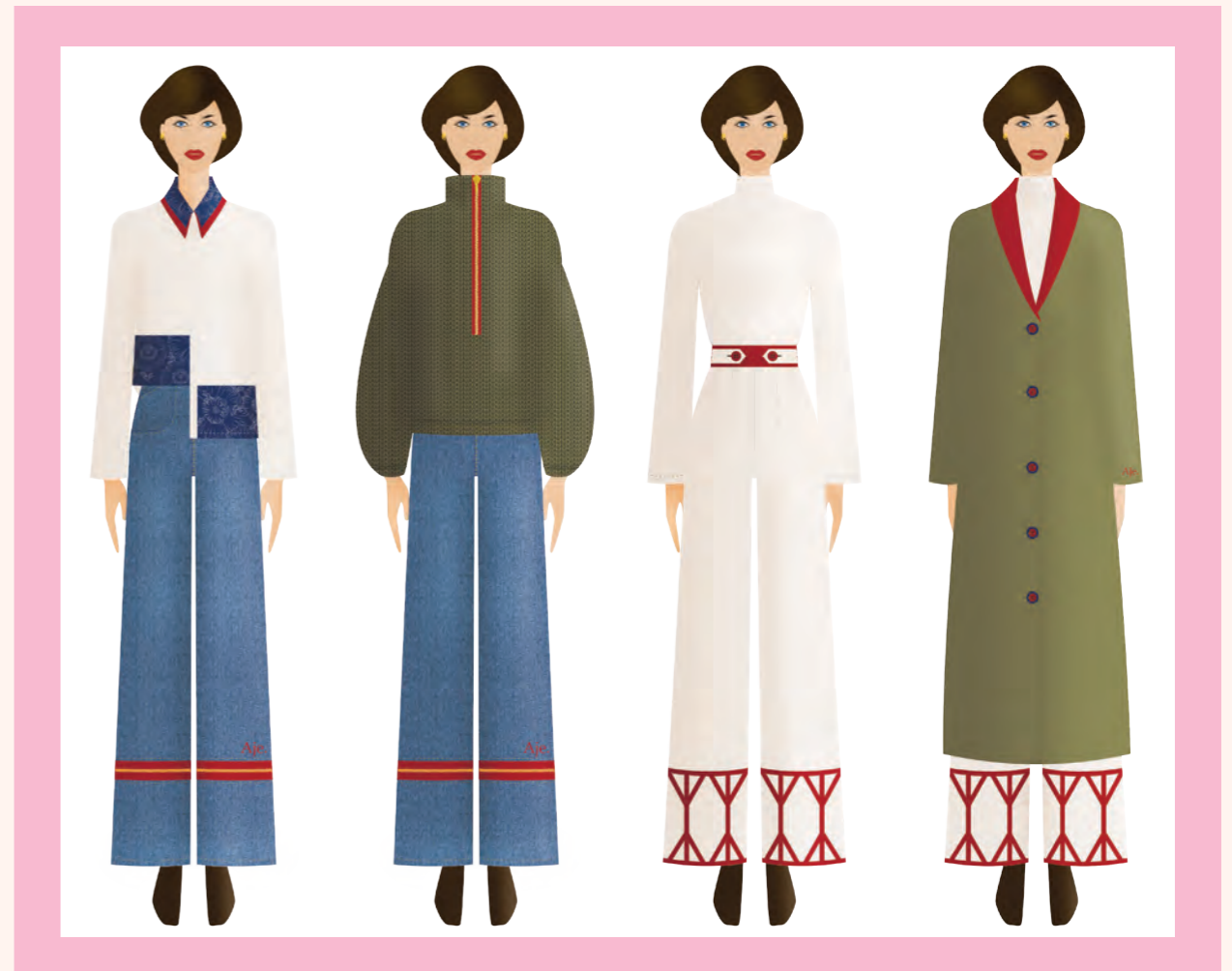
I have three main illustration styles. On this page you see my first style. The brand I created these illustrations needed something fun and wanted to bring a smile to their customers' faces. I took these elements and created this fun cartoon-like style.



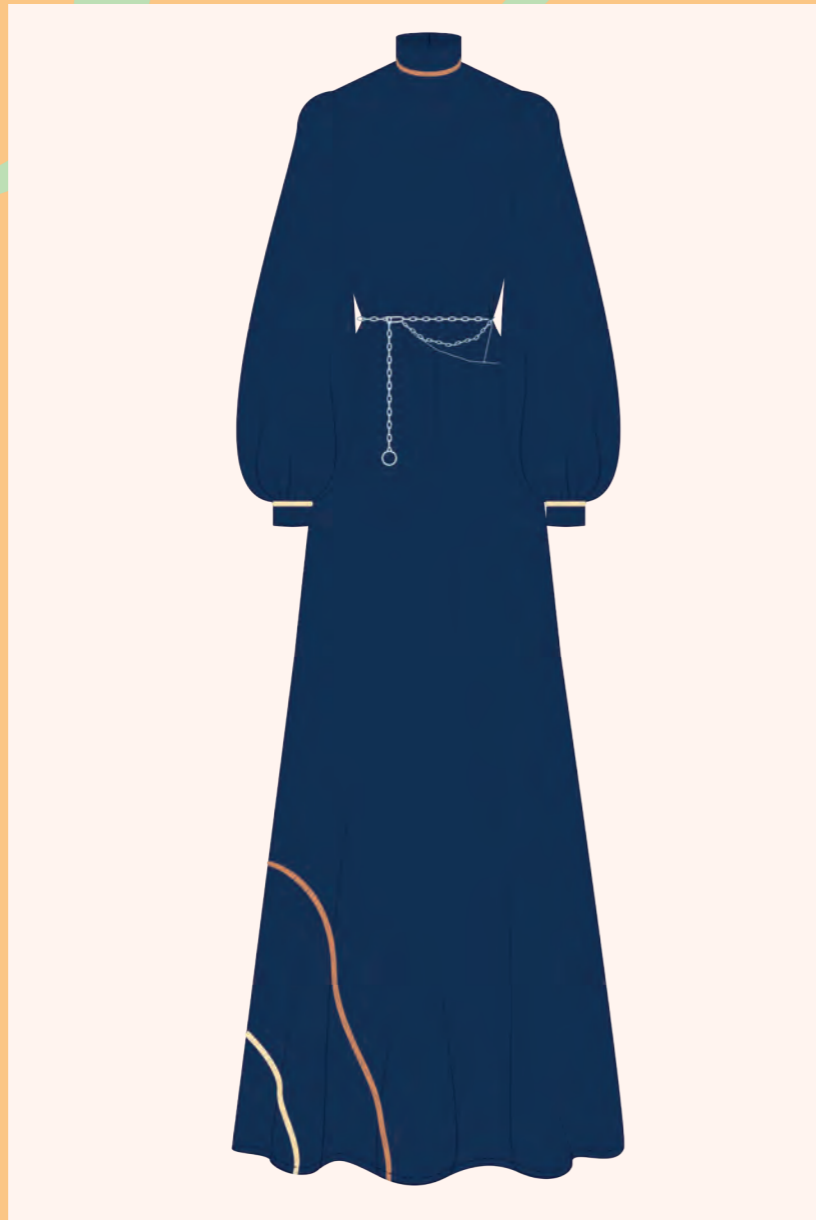
This is my second style that I created for one of my collections. This was for a plus size brand that wanted to focus on being confident and bold.



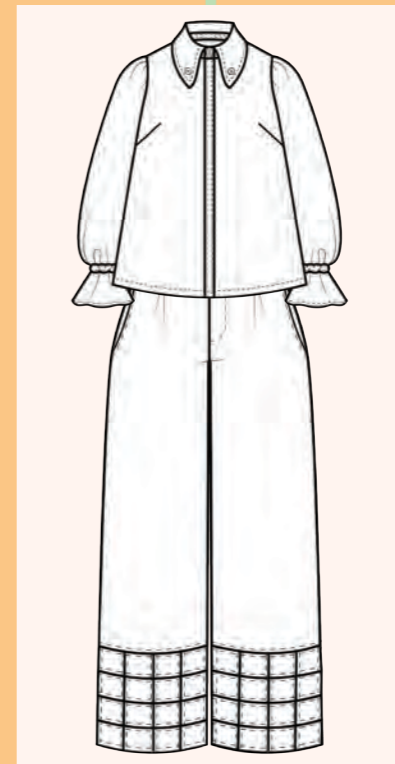
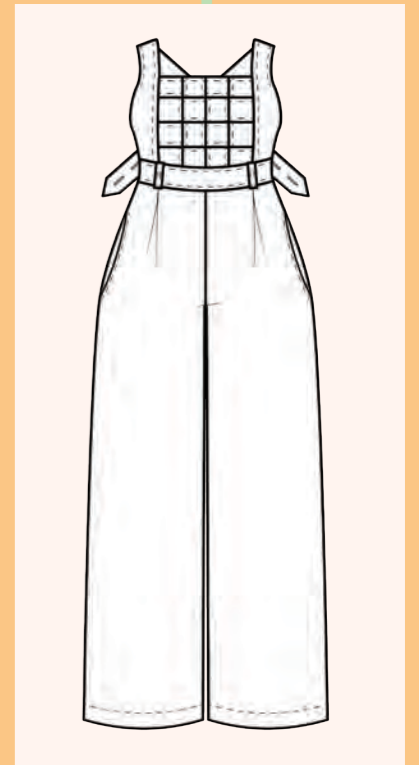
My third illustration style aims to emphasise the cloth with the figer being elegant and simplistic.



Technical Drawing



I have selected five of my tech drawings to show that I can use pattern, knit and colour. I have also included black and white tech drawings to show stitching, shape and pleating.



03

Garments



These garments are from my final collection. It was for my pulse size brand and the photoshoot emphasised the craft room.



The garments on this page were for my pre collection. The inspiration was from the one hour of the day when everything is turned golden by the sun as it sets.



These garments were singular pieces that I have designed and sewed myself.

The top left is inspired by the nomad with piping to create an image of the lines of the land. This piece was shown at ekka 22.

The bottom left was designed for an autumn winter collection. The right outfits were created for a fashion runway event.



04

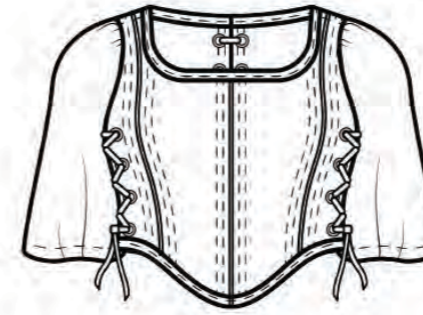


Tech Packs

Style Page

Ciwi.

Style no/ name:	Cross stitched corset	Designer:	Amygrace Haugh
Season:	A/W 22	Department:	Womenswear
Date:	30/9/21	Manufacturer:	In House



Colour way - Pattern PSB



Description:	Rounded square neckline, flared sleeve, fitted, cropped soft corset top. Featuring contrast stitching and a lace up closure on the side and back seam.
Main Fabric 1.:	100% cotton broadcloth
Main Fabric 2.:	100% cotton broadcloth
Contrast Fabric:	100% polyester peach skin

Trims and Components Page

Ciwi.

Style no/ name: Cross stitched pant
Season: A/W 22
Date: 30/9/21
Designer: Amygrace Haugh
Department: Womenswear
Manufacturer: In House

MAIN FABRIC:

Composition: 100% polyester peach skin
Width: 126cm
Cost: \$10.50
Supplier: Spotlight



SWATCH IS FOR QUALITY AND COLOUR REFERENCE

CONTRASTING FABRIC:

Composition: 100% cotton broadcloth
Width: 112cm
Cost: \$2.97
Supplier: Spotlight



SWATCH IS FOR QUALITY AND COLOUR REFERENCE

INTERFACING:

Supplier & code: Birch 9313792446620
Width / diameter: 90cm
Colour: White
Qty: 1m



MAIN THREAD

Supplier: The fabric store
Brand & code: Gutermann
Size: 100m
Colour: 1005



ZIPPER:

Supplier & code: Birch metal zipper -
Length: 18cm
Teeth size: 5mm teeth
Colour: Black
Qty: 1



ELASTIC:

Supplier & code: Birch
Width: 5cm
Colour: White
Qty: 60cm



EYELETS

Supplier & code: Grunt
Size: 12mm
Colour: Stainless Steel
Quantity: 6



HOOK AND BAR:

Supplier & code: Birch 9313792270096
Size: Large
Colour: Silver
Qty: 2 (Includes 1x extra)



Merchandise Portfolio

05

LOUNGE ROOM

Ciwi.

Rhythm top
 AW221513
 Banded neckline, flared sleeves, loose fit shirt. Featuring a back yoke and two button placket closures.
Composition: Cotton poplin, Cotton elastane
Size: 16 18 20 22 24
RRP: \$140

Rhythm pant
 AW223216
 High waisted, wide leg, full length pant. Featuring a inseam pocket and a fly front closure.
Composition: Cotton elastane, Cotton poplin
Size: 16 18 20 22 24
RRP: \$190

KITCOON Ciwi.



Pikelet Button up
AW222313
Regular collar, loose fit, bishoped sleeve, button up. Featuring ribbed cuff.

Composition Plain Stretch Cotton Poplin Wool

Size 16 18 20 22 24

RRP \$185

Libri Navy



Pikelet Pant
AW223218
High waisted, loose fit, full length pants. Featuring inseam pocket, a single pleat and a fly front closure.

Composition Plain Stretch Cotton Poplin

Size 16 18 20 22 24

RRP \$200

Libri Navy



Craft Room Ciwi.



Cross stitched corset
AW2212421
Rounded square neckline, flared sleeve, fitted, cropped top corners. Featuring contrast stitching and a lace up closure on the side and back seam.

Composition Cotton poplin Cotton wadding Peach skin

Size 16 18 20 22 24

RRP \$220

Pattern Pink



Cross stitched pant
AW223219
High waisted, wide leg, full length pants. Featuring side seam pockets, low pleats at the front, lace up on the side seam and a center fly front closure.

Composition Peach skin Cotton poplin

Size 16 18 20 22 24

RRP \$190

Pattern Pink



LOUNGE ROOM Ciwi.



Sharp top
AW221312
Scoop neckline, flared sleeves, loose fit, cropped top. Featuring two curved.

Composition Poly Crepe

Size 16 18 20 22 24

RRP \$140

Wine Emerald Green



Sharp skirt
AW224213
High waisted, loose fit, full length, skirt. Featuring inseam pockets and an elasticated waistband.

Composition Polyester Satin tapestry Poly Crepe

Size 16 18 20 22 24

RRP \$190

Pattern Pink



LOUNGE ROOM Ciwi. July / August



Sharp top	\$140	Cleft dress	\$210	Boat top	\$155	Rhythm top	\$140	Quaver jumpsuit	\$250
Semi jacket	\$200	Sharp skirt	\$190	Sound coat	\$200	Boat mini skirt	\$170	Rhythm pant	\$190

LOUNGE ROOM Ciwi.

Secret Ingredient Jumper	Table cloth dress	Secret Ingredient Pant	Pikelet Pant	Tea spoon Skirt	Teapot Cozy Short	Tea Towel Button Up	Teapot top	Pikelet Button up	T&C top	
AW2210321	AW227214	AW223227	AW223218	AW224215	AW2211119	AW222514	AW221315	AW223215	AW221316	
RRP: \$240	RRP: \$260	RRP: \$240	RRP: \$200	RRP: \$200	RRP: \$165	RRP: \$190	RRP: \$175	RRP: \$165	RRP: \$150	
Embroidery coat	Dolphin stitch blazer	Pearl stitch dress	A and C Jumpsuit	Dolphin stitch pant	Cross stitched pants	Threaded Skirt	A and C Button up	Inspiration long sleeve	Cross stitched corset	Threaded Button up
AW225211	AW229511	AW227212	AW228212	AW223214	AW223213	AW224212	AW221521	AW221521	AW2212421	AW223315
RRP: \$500	RRP: \$330	RRP: \$270	RRP: \$250	RRP: \$250	RRP: \$190	RRP: \$195	RRP: \$190	RRP: \$140	RRP: \$220	RRP: \$180
Sound coat	Cleft dress	Quaver jumpsuit	Semi pants	Rhythm pant	Sharp skirt	Boat mini skirt	Semi Jacket	Rhythm top	Sharp top	Boat top
AW225212	AW227123	AW228213	AW223215	AW223216	AW224213	AW224114	AW226312	AW221513	AW221312	AW221514
RRP: \$500	RRP: \$210	RRP: \$250	RRP: \$200	RRP: \$190	RRP: \$190	RRP: \$170	RRP: \$200	RRP: \$140	RRP: \$140	RRP: \$155

Branding



Ciwi is the branding for my final collection. These are mock ups of the packaging that included swing tags, stickers, business cards and thank you cards.

