

STUDIO

BY SHAMUS MASON



ART SERIES HOTELS
THE COSS

THE BRIEF

DESIGN DELIVERABLES

- HOTEL LOBBY + BATHROOM FACILITIES
- HOSPITALITY VENUE
- THREE SUITE DESIGNS

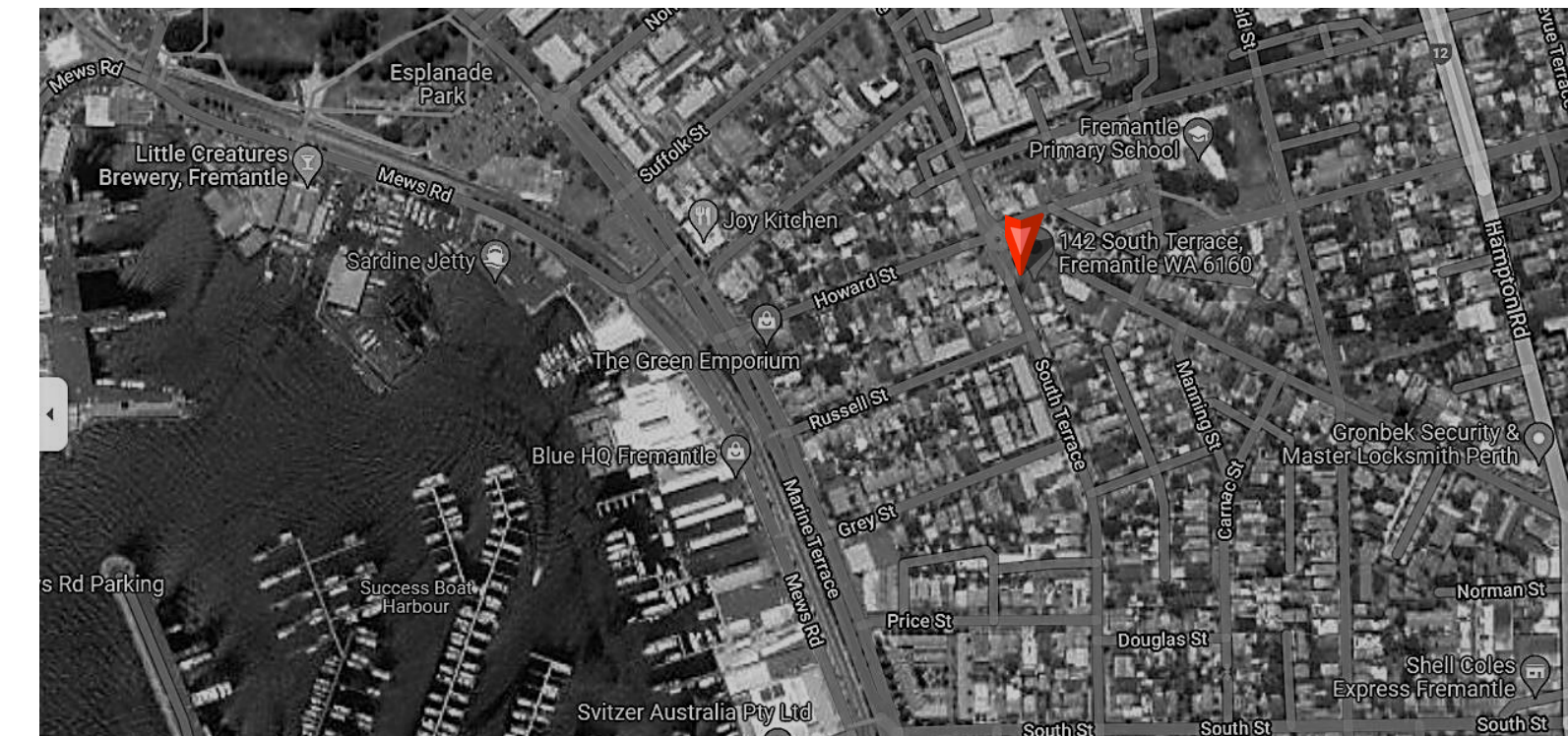
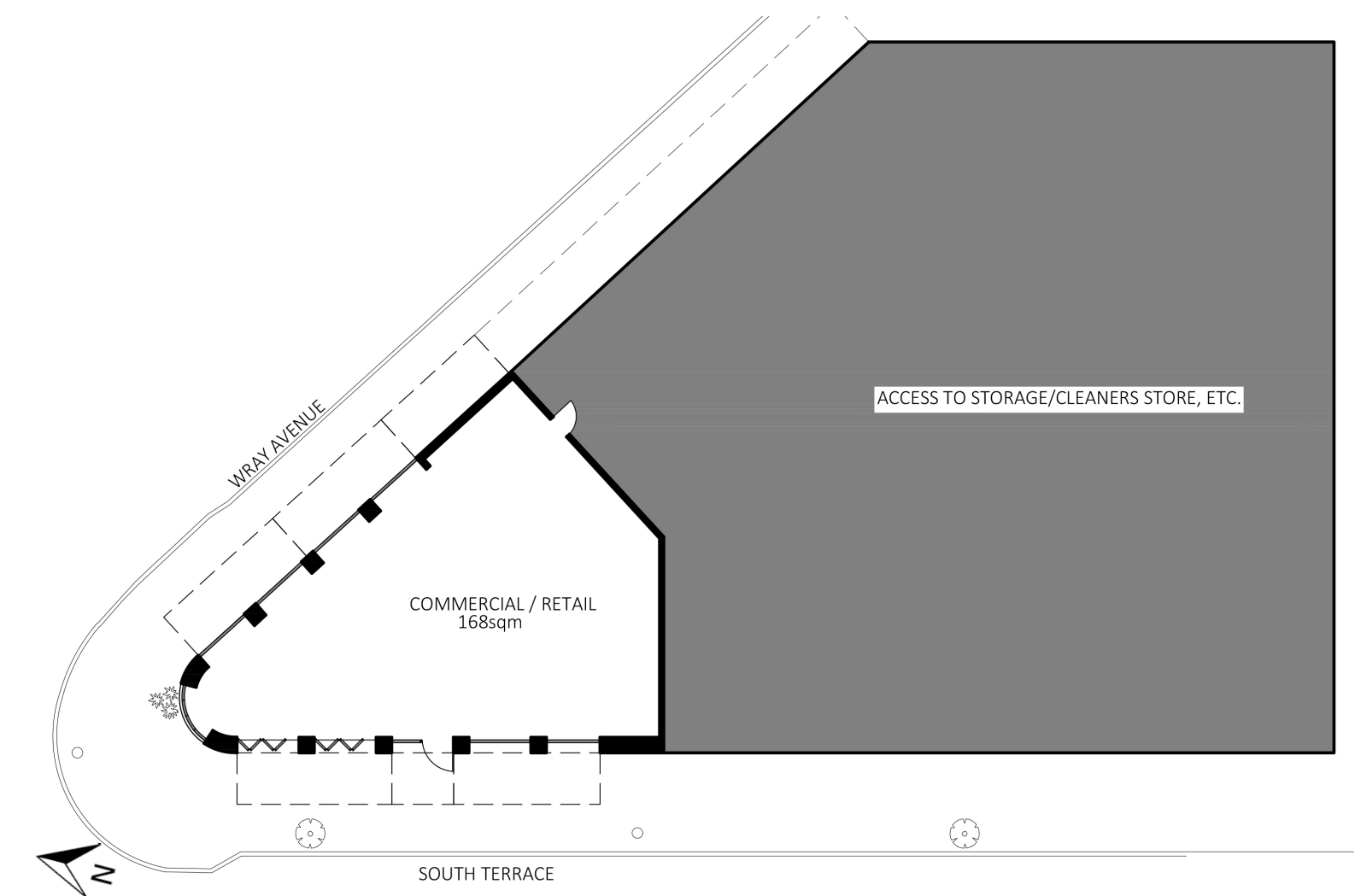
FUNCTIONAL REQUIREMENTS

- LOBBY - RECEPTION, SEATING FOR GUESTS, ACCESS TO LIFTS AND FACILITIES
- HOSPITALITY - BUSINESS FUNCTIONALITY, SEATING FOR UP TO 20 GUESTS
- SUITES - SLEEPING, SHOWER AND KITCHENETTE FACILITIES, CLOTHES & LUGGAGE STORAGE

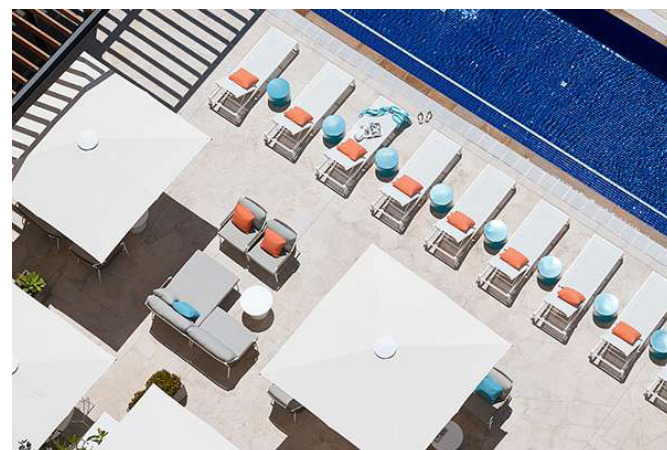
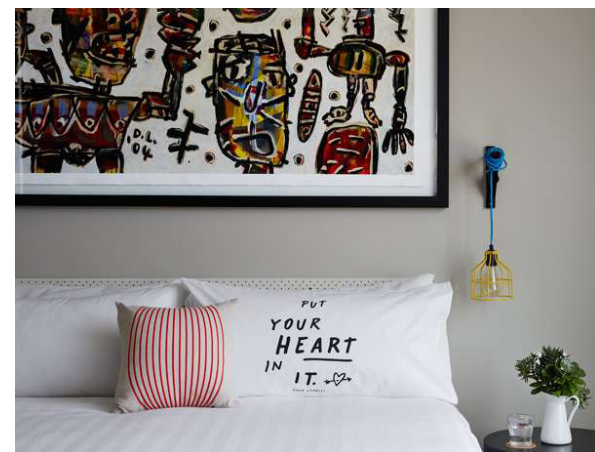
AESTHETIC REQUIREMENTS

- STYLE TO BE IN KEEPING WITH ART SERIES SIGNATURE LOOK
- ARTISTS WORK TO BE SEEN CONCEPTUALLY AND PHYSICALLY THROUGHOUT THE SITE
- WHERE POSSIBLE MAXIMISE VIEWS FROM HOTEL
- 'INSTAGRAM WORTHY' DESTINATION

THE SITE



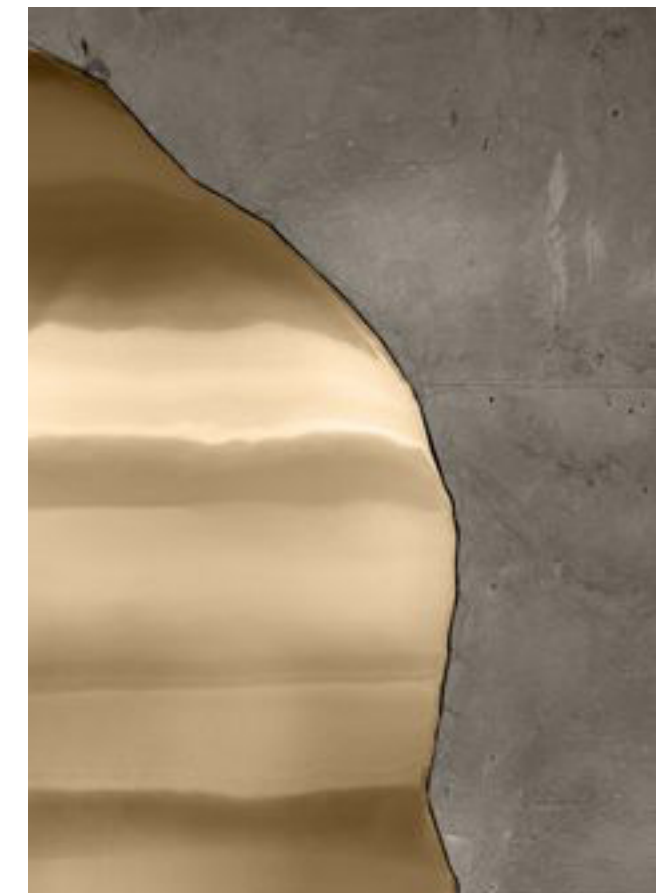
THE CLIENT



THE ARTIST

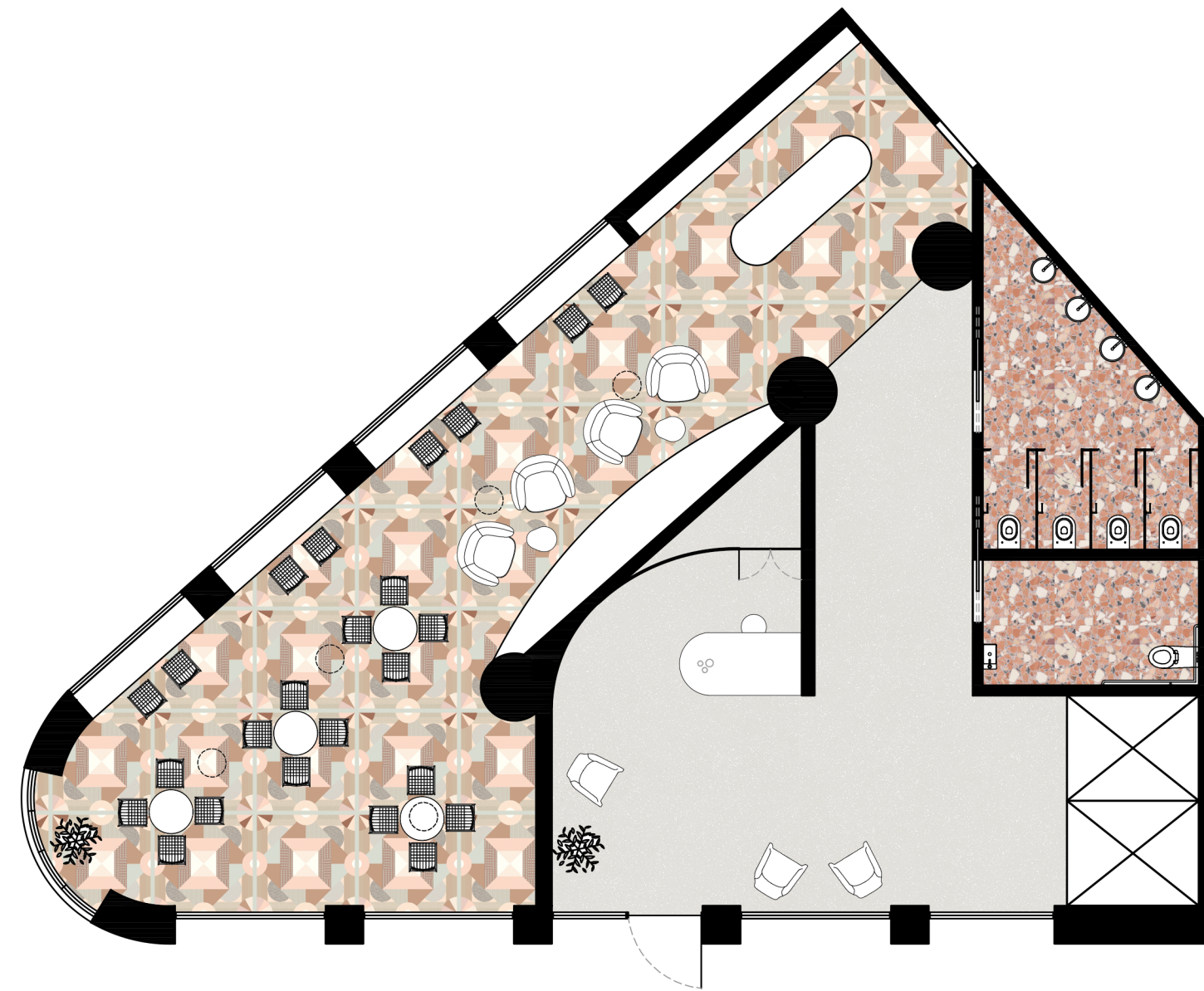


THE CONCEPT



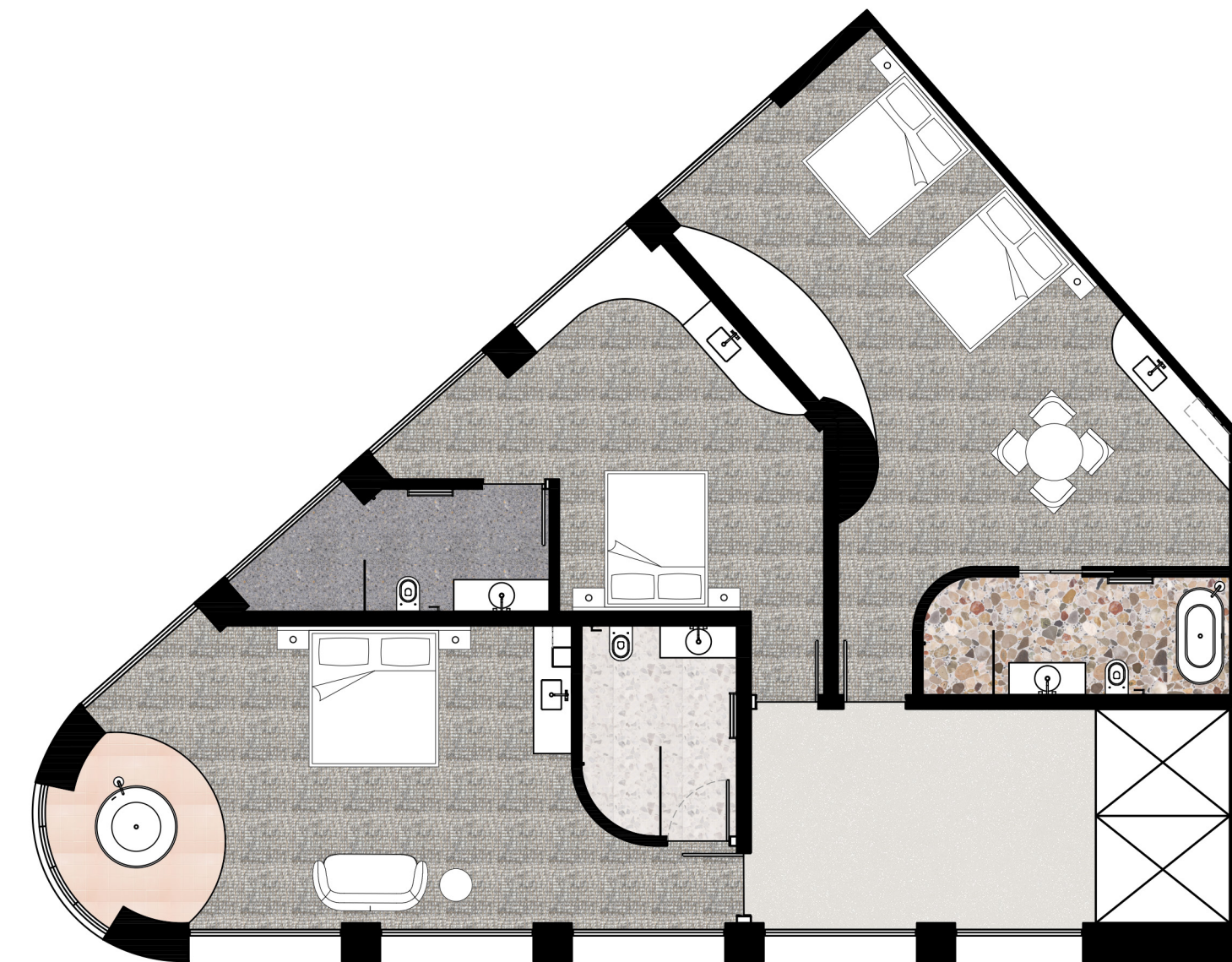
FREQUENCY

GROUND FLOOR



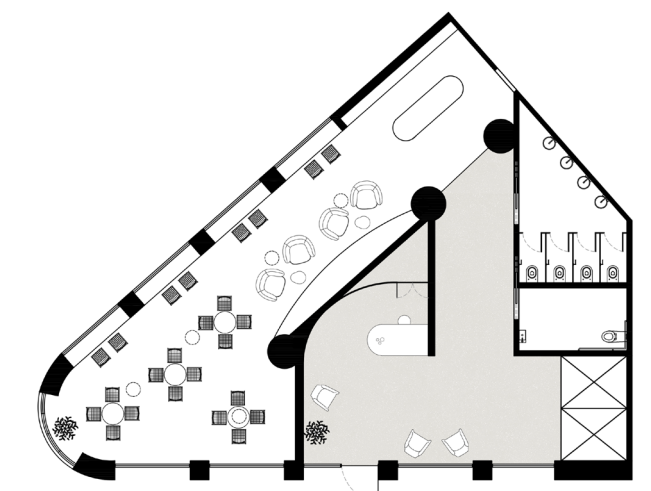
SCALE 1:100 @ A3

LEVELS ONE, TWO, THREE



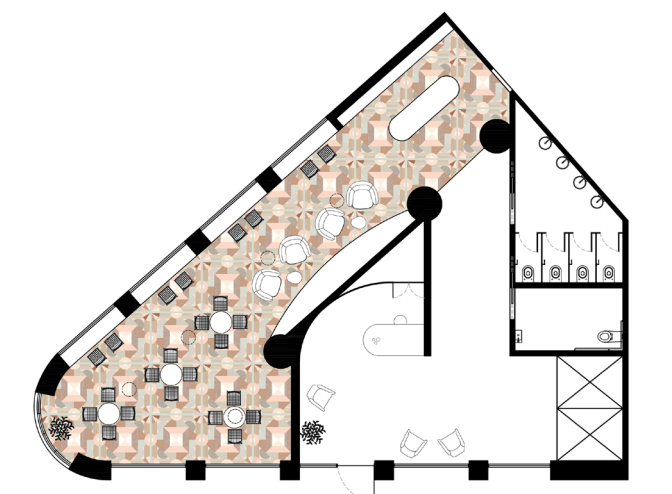
SCALE 1:100 @ A3

THE LOBBY

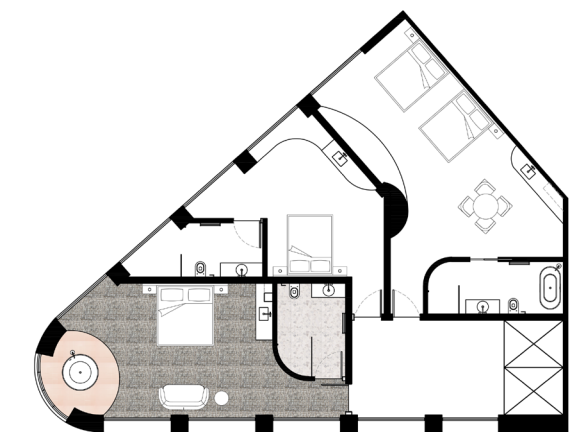


ART SERIES HOTELS, THE COSS

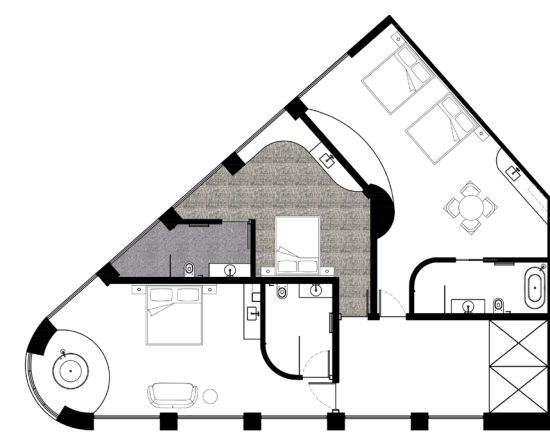
THE BAR



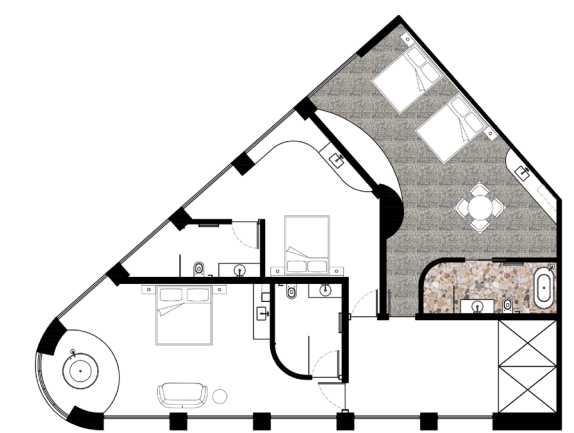
THE KING SUITE



THE QUEEN SUITE



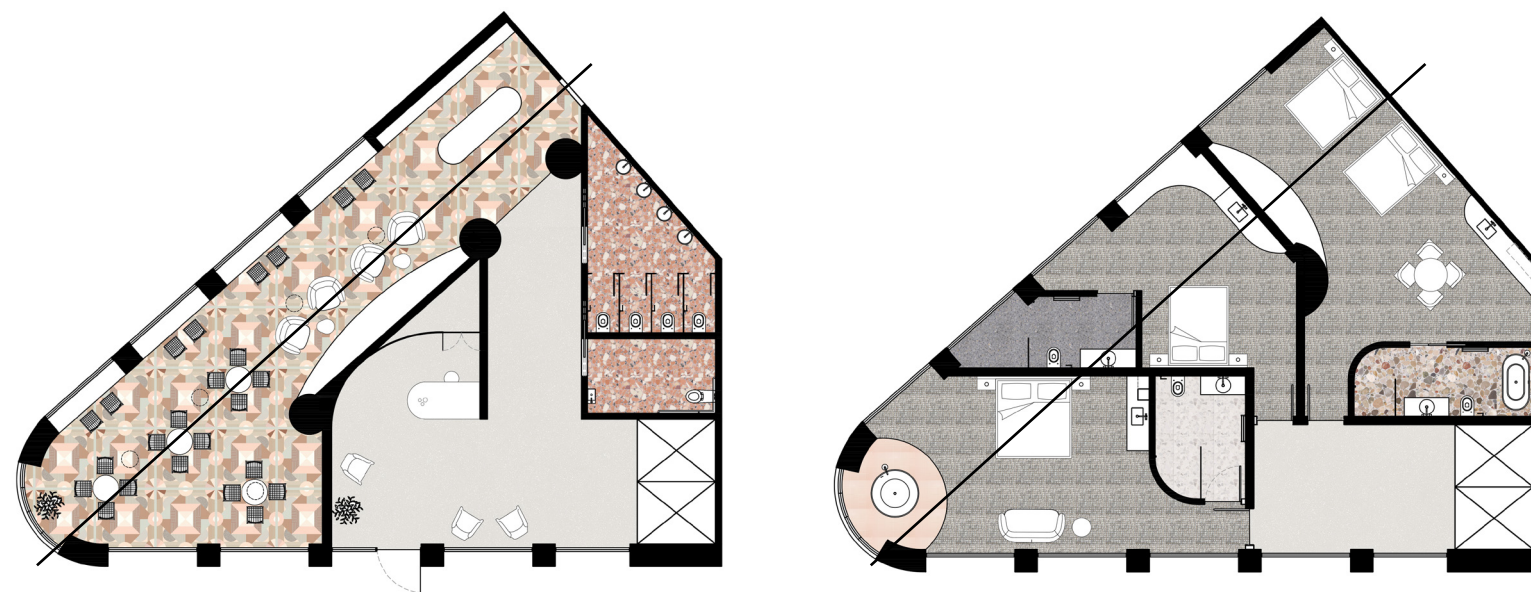
THE DOUBLE QUEEN SUITE



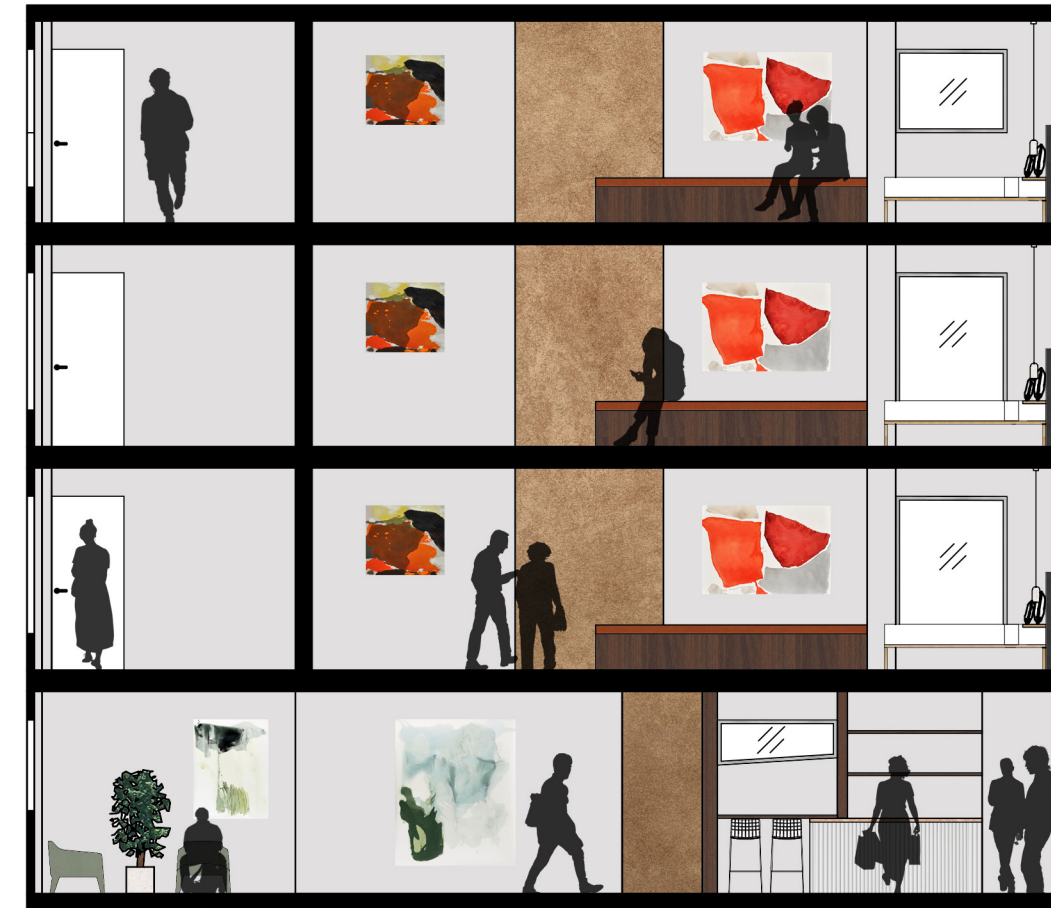
SECTION ONE



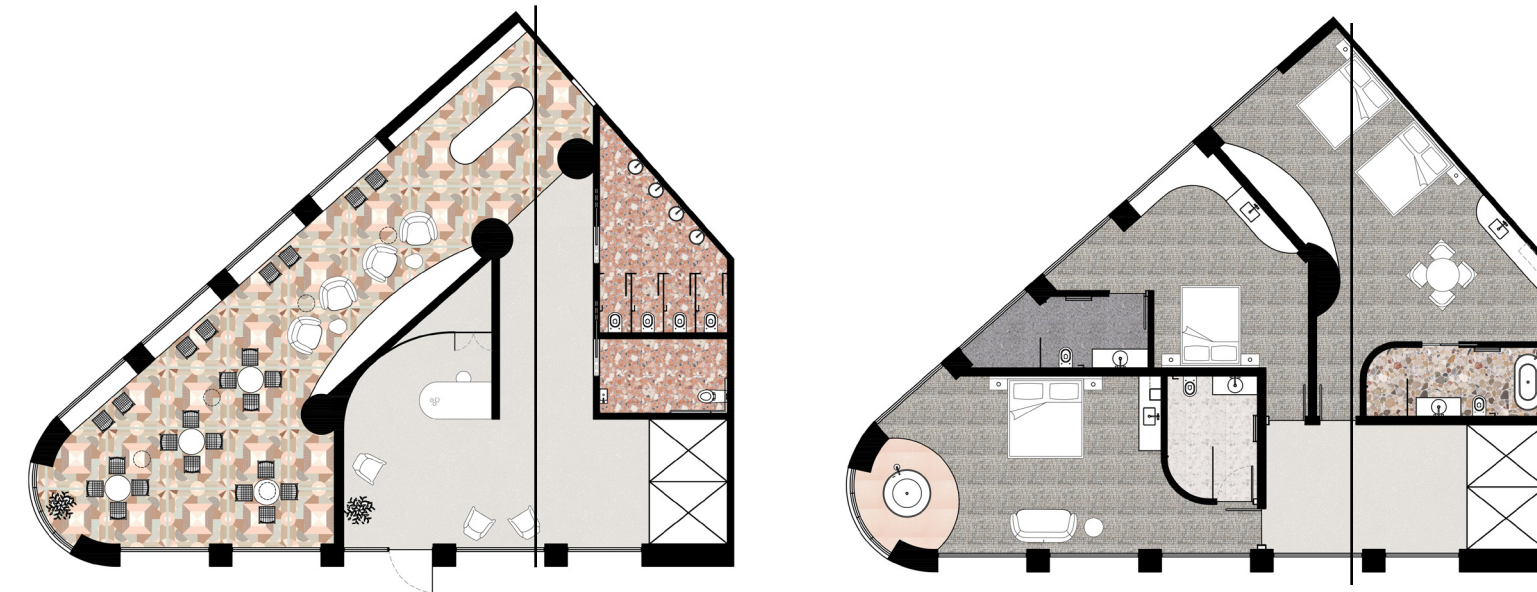
SCALE 1:100 @ A3



SECTION TWO



SCALE 1:100 @ A3





STUDIO
BY SHAMUS MASON